



Castles

HARDY ROAD
Adeyfield, Hemel Hempstead HP2 5EF

HARDY ROAD
Adeyfield, Hemel Hempstead HP2 5EF

Offers Over
£400,000
(Freehold)

Castles



*****CHAIN FREE***** A truly Superb & Spacious Three-bedroom family home which has been kept to a well standard throughout.



The property comprises: Spacious entrance hall, kitchen and diner and patio doors to the garden, leading through to a walkway - perfect for a utility room set up/pantry - there is also a WC and study on the ground floor.

The first floor contains two large double bedrooms, a good-sized single bedroom, and an immaculately presented and re-fitted family bathroom with separate shower.

The property also benefits from UPVC double glazing throughout and gas central heating.

Specifications

- 3 BED MID TERRACE
- 1 RECEPTION
- OPEN PLAN KITCHEN/DINER
- OFFICE
- DOWNSTAIRS WC
- REFITTED BATHROOM
- UPVC DOUBLE GLAZING & GAS CENTRAL HEATING
- WELL PRESENTED THROUGHOUT



Externally there is a private and enclosed rear garden with a large patio area.



A little about the corner of the world we call home...

Located 24 miles north of London, Hemel Hempstead and the surrounding villages offer a great place to live whilst being close enough to the City to have a commutable journey for work or pleasure. London Euston can be reached in as little as 25 minutes from Hemel Hempstead station. The town is also ideally placed for road links with the M1, M25 and A41 motorways all accessed from the Town within just a few minutes, London Heathrow and London Luton airports are also less than 40 minutes away.

Historically significant Hemel Hempstead dates back almost 1000 years, the town has a great selection of character properties

along with many newer styles which were added after the Second World War. Hemel Hempstead sits within the Gade Valley and is surrounded by the Chiltern Hills which offer some of the best open countryside, much of which is classed as an area of outstanding natural beauty. Hemel Hempstead is a great place to raise a family with some of the finest state and independent Schools anywhere in the country. The town also has a great array of leisure facilities such as the Snow Centre, XC Centre, Public Swimming Pools, 17 Screen Cinema plus lots of restaurants, pubs and bars. Just a few minutes drive way is the City of St Albans, market town of Berkhamsted and the larger shopping town of Watford.

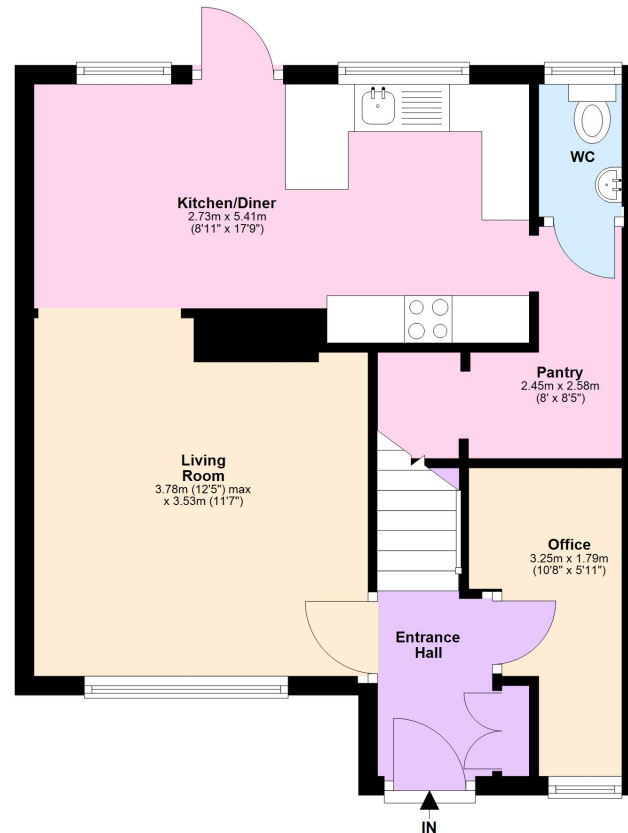
Please Note:

We have not tested any apparatus, fixtures, fittings or services. Interested parties must undertake their own investigation into the working order of these items.

All measurements are approximate and photographs provided are for guidance only.

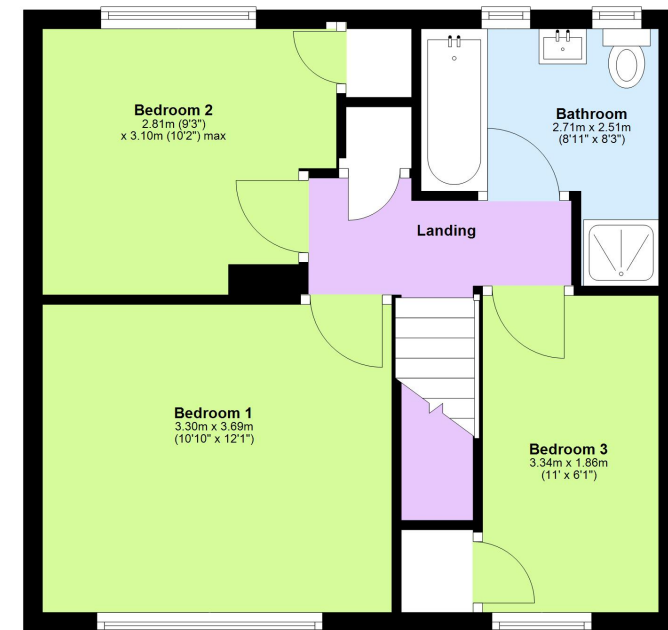
Ground Floor

Approx. 42.3 sq. metres (454.9 sq. feet)



First Floor

Approx. 40.2 sq. metres (433.0 sq. feet)



Tenure: Freehold

Council Tax Band: C

EPC Rating: C

Total area: approx. 82.5 sq. metres (887.9 sq. feet)

This floorplan is not to scale. It's for guidance only and accuracy is not guaranteed.
Plan produced using PlanUp.

Berkhamsted

01442 865252

Eaton Bray

01525 220605

Borehamwood

020 8953 2112

Hertford

01992 501511

Boxmoor

01442 233345

Kings Langley

01923 936900

Bushey

020 8950 2551

Radlett

01923 537111



rightmove

Castles

www.castlestateagents.co.uk